



# Gateway-5G-511/521

---

产品手册

PRODUCT MANUAL

嘉腾机器人  
400 830 1028

## Gateway-5G-511/521

嘉腾5G智能物联网网关是安装在智能制造设备等终端上，使终端设备可以接收与发送5G信号，并将5G信号转为RS232/RS485通信数据，是5G智能工厂内的核心基础组件。

Gateway-5G-511/521 两个型号，是嘉腾分别基于华为与高通5G芯片开发的第一代5G通信模组，基于工业环境标准设计。支持5G/4G/Wi-Fi三种无线通信方式，支持公/专网使用，契合客户基于原有4G/Wi-Fi通信设备升级，新增5G设备的需求。

## Gateway-5G-511/521

1. Jaten 5G intelligent gateway is the core basic component in 5G smart factories by installed on intelligent manufacturing equipment, so that terminal equipment can receive and send 5G signals and convert into RS232/RS485 communication data.
2. The two models designed based on industrial environment standards which is Gateway-5G-511/521, are the first-generation of 5G communication modules developed by Jaten based on Huawei and Qualcomm 5G chips. Support 5G/4G/Wi-Fi three wireless communication methods and public/private network use, also meet the needs of customers to upgrade the original 4G/Wi-Fi communication equipment and add 5G equipment.

## Gateway-5G-511/521

L127×W83×H24mm



# 技术参数 CHARACTERISTIC



## Gateway-5G-511/521

L127×W83×H24mm

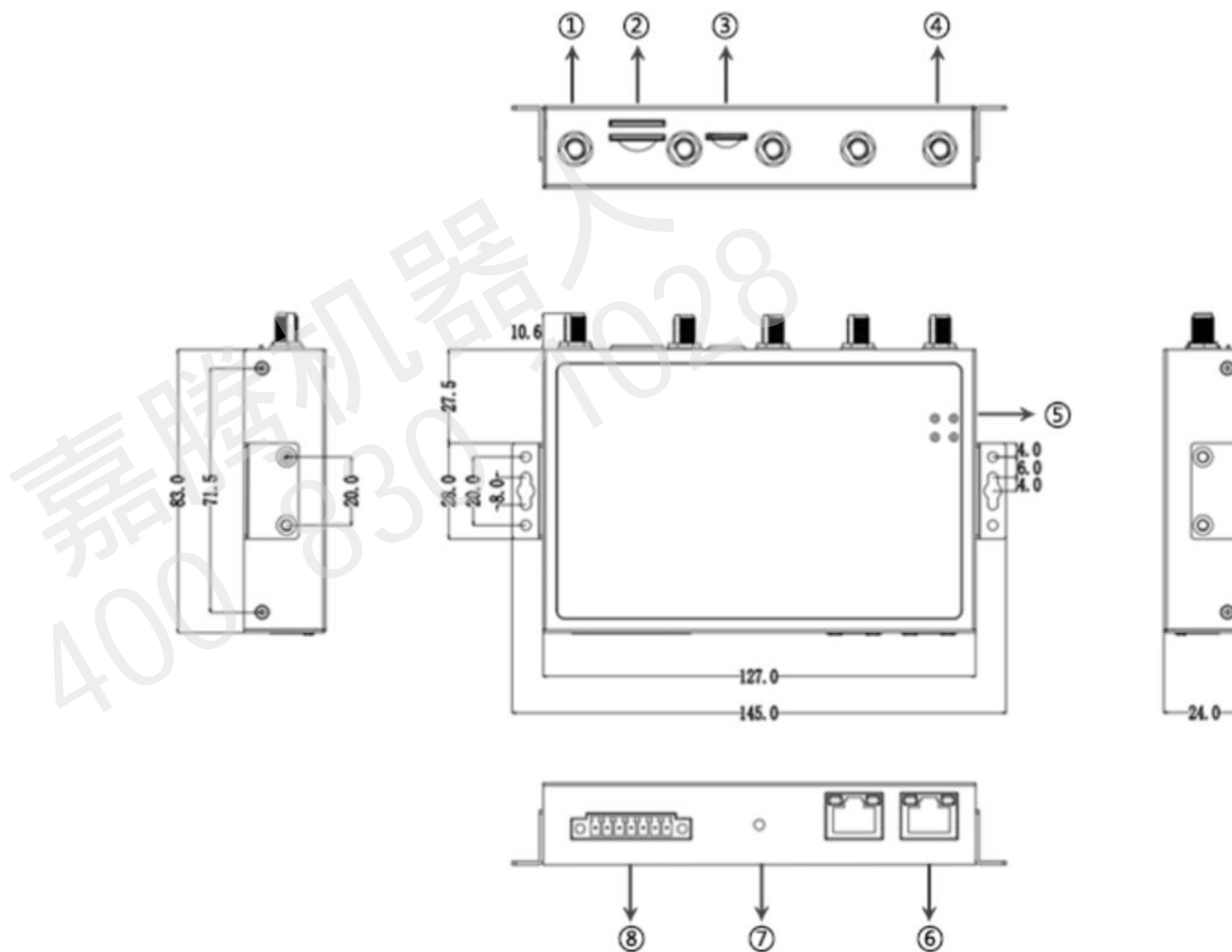
型号 Model	Gateway-5G-511 (华为方案)、Gateway-5G-521 (高通方案)
前面板接口front panel interface	1个7 PIN端子接口、1个RESET按键、2个千兆网口、1个接地螺柱
后面板接口rear panel interface	1个TF卡接口、2个SIM卡接口、5个天线接口 (SMA-K 母头)
工作电压Operating Voltage	+9V~24V DC
平均功耗Average power consumption	约600mA@12VDC
尺寸size	L127×W83×H24mm
工作环境温度Working temperature	-30~+70°C
储存温度Storage temperature	-40~+85°C
相对湿度Relative humidity	< 95% (无凝结)
4G/5G智能拨号	双卡SIM全网通、5G拨号、专网拨号、APN自适应拨号、假连接恢复
WiFi	AP功能 (2.4G)、AP隔离、STATION功能
路由转发route forwarding	内置防火墙与虚拟地址转换 (NAT)、静态路由表
VPN	PPTP协议、L2TP协议、GRE协议、IPIP协议、IPSEC协议
通讯接口Communication Interface	RS232、RS485、Wi-Fi
状态统计Status Statistics	各接口模块诊断信息记录; 本地/远程日志, 各运行业务独立日志; LCP、LCMP、接口流量等链路检测及恢复功能; 移动网络流量统计, 支持下位机流量统计 Diagnosis information record of each interface module; local/remote log, independent log of each running service; link detection and recovery functions such as LCP, LCMP, interface traffic, etc.; mobile network traffic statistics, support for lower computer traffic statistics
时钟同步Clock synchronization	NTP时钟同步及远程管理平台时钟同步, 时区可设置 NTP clock synchronization and remote management platform clock synchronization, time zone can be set
Web管理	页面配置管理、本地升级、云平台远程升级管理 Page configuration management, local upgrade, cloud platform remote upgrade management.

# 产品视图 VIEW



## Gateway-5G-511/521

L127×W83×H24mm





服务热线 Toll Free

**400-830-1028**

实现在火星上搬运与救援

We aim to carry and rescue on Mars



微信公众号

WeChat



微信客服

WeChat Service

邮箱 Email

**[Marketing@jtrobots.com](mailto:Marketing@jtrobots.com)**

官网 Website

**[www.jtrobots.com](http://www.jtrobots.com)**